

The Atlanta Astrologer



Metropolitan Atlanta Astrological Society

July 2010

Volume No. 39

Issue No. 7

Atlanta, Georgia

The August Grand Cross

Bill Herbst

www.billherbst.com

This summer's initial major alignment, the June 26th overlay of a lunar eclipse onto the Saturn-Uranus-Pluto T-square, was significant because it represented the union of two separate astrological configurations, each of which carries major implications over time.

The outer-planet T-square, with its exact relationships between Saturn-Uranus and Saturn-Pluto, is the dominant alignment in the heavens for four full years, from 2008-2011, defining a tonality of particularly powerful conflicts in the archetype field that set the stage for the critical mass period of 2012, when the revolutionary upheavals of the Uranus-Pluto square take center stage as we embark on our long rollercoaster ride through the rest of the decade of the 2010s.

The June lunar eclipse also has natural significance over a roughly six-month period between eclipse pairs. The most recent previous eclipse was an annular solar on January 14th, 2010, so the effective period of the June-July pair of eclipses begins roughly halfway between that last solar eclipse and the lunar eclipse of June 26th. That midpoint date is April 5th. Effective periods of eclipses are ballpark dates rather than exact timings, so that April 5th date should be given a week or two on either side.

The next eclipse is a solar on January 4th, 2011, so the effective periods of the current eclipse pair ends around October 1st, give or take a week or two.

Coincidentally, the Deepwater Horizon drilling rig explosion occurred on April 20th, right near the beginning of the eclipse's effective period. I will have more to say about that event later in the newsletter.

So, we have a four-year configuration aligned with a six-month configuration to ramp up the intensity of the conflicts indicated by the T-square, namely, social confrontations as the status quo breaks down (Saturn oppose Uranus from Libra to Aries), with the ruling elites working overtime to resurrect that status quo in spite of its obvious unsustainability. Meanwhile, the Saturn-Pluto last-quarter square from Libra to Capricorn implies ruthless power struggles and revelations concerning formerly secret abuses of power at every institutional level in society, extending from government through business, education through healthcare, and into the military. The powers-that-be are fighting, not for their lives, but to maintain their positions of power and influence.

The June lunar eclipse, which occurred on the Cancer-Capricorn axis, brought into focus the opposed issues of personal security (Cancer Sun) through sanctity of home and family versus institutional and governmental control. The problem for the ruling elites becomes how to keep the public docile and unquestioning even as their remaining

Continued on Page 3

THIS MONTH'S EVENT

Thursday, July 15, 2010
7:30 pm

SPEAKER
Brian D. Lynch

TOPIC
The Venus Transit--
2012 & World Initiation



LOCATION

2054 Harobi Drive, near Northlake Mall,
just off Lavista, behind the DeKalb County Library

Letter from the President

Hi Everyone!

Welcome to the first communique from your new Prez! Thank you for your support and I look forward to speaking with you from this format keeping you informed of your Board's activities in behalf of MAAS.

Since we have been in office, which is less than 30 days, we have already been hard at work for you and have accomplished quite a bit. Many thanks go to Maria Betancourt who has spent many long and lonely days restoring our library to professional status with a computer inventory. It should now be very easy for you to find a book by either author, title or subject. The library looks great and functions great! Thanks, Maria! Erika Sowell & I tried to help out for a couple of days, but our library skills were no match to Maria's. So thanks also to Erika for your efforts!

The next group we need to thank really deserves a day at the spa for their efforts! Coleen Conway, Grace Burkhalter, Erika Sowell, Vaughan Kilpatrick, Paula Dare, our Groundskeeper, Dino Teetash and myself worked very hard refreshing the energy at MAAS with a sageing ceremony and cleaning the building. Windows, walls, kitchen, floors are all sparkling clean. Thank you all for your hard work and I hope your sore muscles have recovered.

We have also been working hard speaking to potential lecturers and hope to have this year's schedule available to you very soon.

We kicked off our new season with a lecture from David Beazley which was most informative and full of foresight. Thanks, David, for a terrific lecture and all those tips...we're watching the gold!!

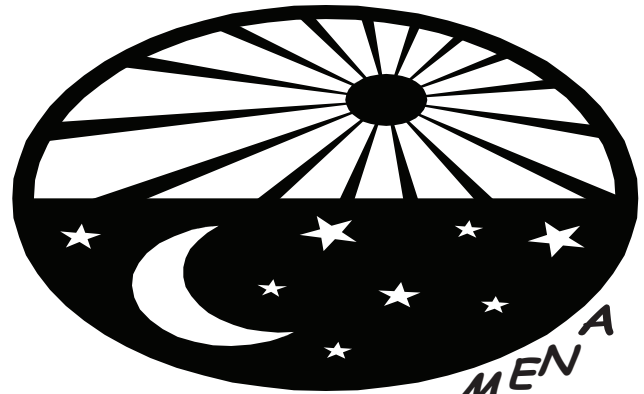
The Uranian students also enjoyed a good workshop with David. We hope to have at least one more class so that we will be ready for the Uranian Conference here in Atlanta. David, you are a terrific teacher. Thanks for sticking with us. I will take the

Continued on Page 3

THE EDITOR'S CORNER

Special thanks to Erica Sowell, Kathy Papoutsis, and Collen Conway for their contributions to this month's newsletter. A big monthly thanks to those who provide the wonderful refreshments at each meeting. *I wish I could keep up with all of you.* Members, make sure these hard workers know how much you appreciate them.

Deadlines for submissions are the first of each month. Submit your entries to the Editor at <maasociety@att.net>.



ASTROPHENO MENA

July 21

Saturn Enters Libra at 11:11 am

July 21

Sun Enters Leo at 6:21 pm

July 23

Jupiter Stationary Retrograde at 8:03 am

July 27

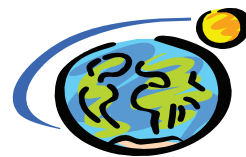
Mercury Enters Virgo at 5:43 pm

July 29

Mars Enters Libra at 7:46 pm

August 6

Venus Enters Libra at 11:47 pm



LUNATIONS

July 25

Full Moon in Aquarius at 9:37 pm

August 29

New Moon in Leo at 11:08 pm

NOTE: From Solar Fire Gold.

MAAS

404-634-2677
www.atlantaastrology.com

UPCOMING SCHEDULE

Thursday, July 15, 2010

Speaker

Brian D. Lynch

Topic

The Venus Transit - 2012 and World Initiation

Brian D. Lynch is a father of 6 children, four-time grandfather, practicing astrologer, former owner and manager of Sirius Bookery in Amherst, Mass in the early '70's, friend of Michael Erlewine, and a former astrology instructor at the Mayflower bookshop in Detroit

In the 1980's, Brian gave an astrology seminar for M.A.A.S. with Bil Tierny and Bob Thibideau. He is a student of astrosophy and a trained Waldorf teacher.

Letter from the President

Continued From Page 2

liberty of speaking for the group by saying we will all be on the intermediate track at the conference!

Thanks to Paula Dare for all the work you put into your Solstice presentation at last month's meeting also.

This month we are hosting Brian Lynch who has not spoken at MAAS since the 80's and has recently returned to Georgia. We are happy to have Brian back and look forward to his lecture on "The Venus Transit 2004-2012".

As I draw near to the end of writing this column my focus shockingly shifts and I sadly remember that oil is still gushing, the animals are suffering and dying, their habitats are being ruined and a way of life is ending. As astrologers, we all know the intensity and lasting effects of this Cardinal Cross. Our beautiful planet is bleeding.

I'm sure many of you have read and are participating in the requests for all of us to join in a global meditation to send healing energy to our ocean life. I'd like to ask each of you to take a minute and visualise a healing net falling over the waters of the earth filling them with healing light and energy.

I'm looking forward to seeing all of you on Thursday!

With Love,
Kathy

Grand Cross

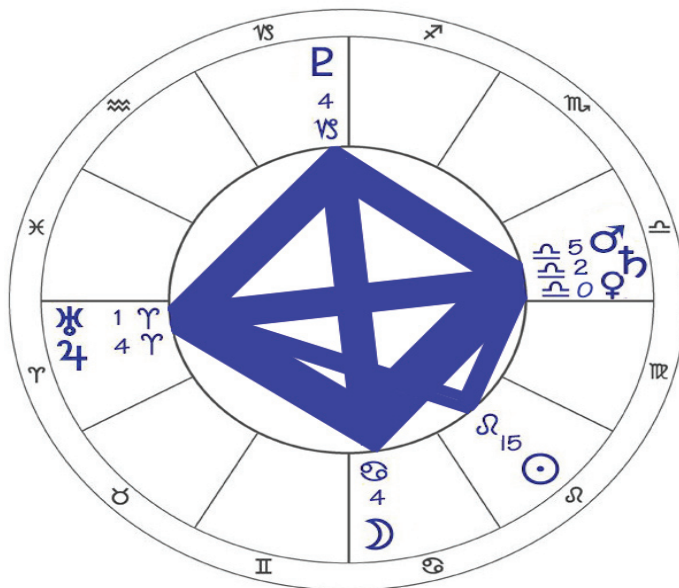
Continued From Front Page

illusions of security are shattered? One answer, for better or worse, is to turn up the already-overbearing volume of the American Dream Hologram through media chatter and endless advertising about our "unlimited, have-it-now" consumer paradise of flat-screen TVs and new cars.

So, the June configuration, the Saturn-Uranus-Pluto T-square became four outer planets as Jupiter conjoined Uranus in Aries. Those four become seven in the Grand Cross configuration as the Moon conjoined Pluto at the apex of the T-square and the Sun and Mercury filled in the missing fourth point (or bull's-eye) opposite in Cancer. Seven planets including both Lights in an alignment whose significance lasts for years. Wow.

By contrast, the August Grand Cross is quite another animal, very similar in one way and very different in another.

Here is the chart of the coming Grand Cross:



6-7 August 2010

Starting with the basic cardinal T-square, now four outer planets strong (Jupiter, Saturn, Uranus, and Pluto), both Mars and Venus have joined the party by moving into Libra, resulting in a six-planet T-square. The Sun in Leo will be exactly at the imbalanced stress point (sesquiquadrate Uranus and semisquare Venus). And

Continued on Page 4

Grand Cross Continued From Page 3

finally, the Moon in Cancer will fill in the T-square's bull's-eye and complete the eight-planet Grand Cross. Of the major natal symbols, only Mercury, Neptune, and Chiron are left out.

Well, an eight-planet configuration is certainly meaningful, but there's a serious problem, which has to do with the duration of the alignment's effective life-span.

The Moon completes the configuration and forms the Grand Cross. Without the Moon, we don't have a Grand Cross, just a high-tension T-square with an imbalanced Sun focus.

Why is this a problem? Because the Moon is the fastest moving body in the heavens, traversing an average of 12-14° through the zodiac every day, thus changing signs every 2+ days. If we use an allowable orb for civilizational transits of $\pm 10^\circ$, then the effective period of the Grand Cross is when the Moon is between 24° Gemini and 11° Cancer. That arc in the zodiac translates to 28 hours of Moon travel, from about 1:00 p.m. GMT on August 6th through 5:00 p.m. on August 7th.

Before and after that one day, no Grand Cross.

This is always true of any Moon-completed multi-planet configurations. They are extremely short-lived. And besides their brief half-life, they are not rare. In fact, they happen all the time. During the life of any longer-term civilizational transit or aspect pattern, the Moon frequently completes more complex but brief alignments.

Consider:

- **Any** square between two or more outer planets becomes a Moon-completed T-square TWICE in every month of its existence, but for only 36 hours.
- **Any** opposition between two or more outer planets becomes a Moon-completed T-square TWICE in every month of its existence, but for only 36 hours.
- **Any** trine between two or more outer planets becomes a Moon-completed Grand Trine ONCE in every month of its existence, but for only 36 hours.
- **Any** sextile between two or more outer planets becomes a Moon-completed Yod/Finger of God ONCE in every month of its existence, but for only 36 hours.
- **Any** T-square between three or more outer planets becomes a Moon-completed Grand Cross ONCE in every

month of its existence, but for only 36 hours.

The result of these two conflicting measures of importance is a divided judgment. On the basis of the number of planets involved — EIGHT! — the August Grand Cross is one helluva configuration. On the basis of its durability, it is a laughable nothing, a mere blip on the radar screen whose significance is gone almost before it arrives.

In balance, the August alignment is certainly worth discussing and taking note of, but more as a seven-planet T-square with an imbalanced stress point, rather than as an eight-planet Grand Cross.

Important or not, what are the basic implications of this second summer alignment? Whether we consider this a T-Square or a Grand Cross, the presence of an imbalanced stress point (semisquare-sesquiquadrate) holds a central key. Since that stress point falls right on the Sun in mid-Leo, my simplest deciphering of the symbolic meaning is a crisis in leadership caused by the willingness of most current leaders (in government and business) to lie their asses off about what's happening by obfuscation or outright denial. The addition of the intimacy planets Venus and Mars in Libra reveals a strong wish for social harmony, however superficial or false that peacefulness may be. With those Libran positions bracketing Saturn within the existing T-square, authorities will try to put on a happy face in the midst of bad news wherever we turn. At almost every level of social concern — financial, economic, political, environmental, military, etc. — the powers-that-be and their proxies in the corporate-run mainstream media feed us an endless stream of lies, propaganda, and spin. George Orwell must be smiling in his grave.

Lying by authorities is nothing new, of course. Lying itself is part of the human condition, and lies on the part of authorities have been a staple since society was first organized into dominance hierarchies. What is different here is the desperate effort to maintain control and resurrect a permanently screwed status quo, to keep the terrible game going awhile longer.

The authorities will succeed, too, at least for a time, but with increasing pockets of failure all the way through 2011 and into 2012, when the jig will be up.



HAPPY RETURNS
TO THIS MONTH'S MEMBERS!!!