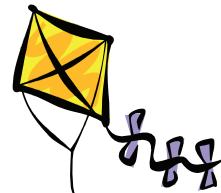


The Atlanta Astrologer



Metropolitan Atlanta Astrological Society

March 2009

Volume No. 38

Issue No. 3

Atlanta, Georgia

INNOVATIVE APPROACHES TO THE ASTEROID GODDESSES FOR MAJOR ARCHETYPAL SHIFTS IN THE PERSONAL JOURNEY

Part II is continued from the January 2009 issue

Cathy H. Burroughs

Cathy Burroughs: This is not necessarily my personal perspective, but please speaks to this: There was a time in the Feminist Movement when women were extremely sensitive and hostile even to men using or "appropriating" female imagery like this. For example, I went to an all women's college and when it converted to co-ed, men began to fill in all the leadership roles in student government, etc... Any thoughts about this as it apply in general to our culture, to astrology, to your work with The Goddess?

Gary Caton: Well, I will be happy to stand aside if there were just others doing it! You know, Aries is more than happy to move on. But seriously, I cannot believe that in such a female populated profession that more people have not taken a serious look at these archetypes. I feel that Demetra's book, while certainly seminal, was - as any "cookbook" must be - well, a bit too logical, fact based and left brain oriented. I am looking for a more process oriented, meaning seeking, right-brained approach. This is why I have tried to expand on the first ten pages of her book instead of just writing yet another mass appeal cookbook.

I also think it is very important that we define the asteroids as they function as a planetary group within the entirely new heliocentric Cosmology which is emerging and originally existed outside of Pluto's orbit - along with the Centaurs as a group (now pulled inside of Pluto) and the "Plutoids" or Kuiper belt objects, outside of Pluto's orbit.

Ceres and the asteroids represent the transformational process from the personal to social planets as well as from social to personal. Centaurs represent more specific

(than Uranus or Neptune) agents of the process of true individuation beyond social structures (as renegades from the Kuiper belt whose mythic deaths represent models of individuation/evolution). Because they dwell beyond the invisible gas giants (Uranus and Neptune) - I think of Eris and the other Kuiper belt objects (even Pluto) as representatives of trans-generational (rather than trans-personal or generational) themes. Definitions of the Asteroid Goddesses in this Application

Cathy Burroughs: What key phrases or definitions are you using for the Asteroid Goddesses?

Gary Caton: Ceres: The Bringer of Seasons. The re-claimer of lost or abducted parts of ourselves. The re-cycler of dead growth. Our capacity for personally initiated transformation and the self-initiated transformational process as a whole.

Vesta: Focus, Compression, Withdrawal. The first step of the transformative process where we are compressed like a spring.

Pallas: Creative release. Springing forth of new patterns and stories. The second step of the transformative process where we repeat various small versions of the new larger order we would like to invite into our lives.

(Continued on Page 3)

THIS MONTH'S EVENT

Thursday, March 19, 2009
7:30 pm



Gary Caton



TOPIC
Synodic Cycles

LOCATION

2054 Harobi Drive, near Northlake Mall,
just off Lavista, behind the DeKalb County Library,
which is currently under renovation

Letter from the President

Greetings MAAS Members,

Thanks to all who attended the standing room only lecture by Demetra George last month as well as those who attended her workshop. I'm sure it's an adjustment to think along the lines of a different house system, but all systems are worthy of consideration.

Please mark your calendars for Thursday, March 19th as you welcome Gary Caton for his first visit to our group. We haven't had a talk on Synodic Cycles, so I'm sure this will be an interesting lecture.

If you are interested in a beginning Astrology Class or know someone who is, please let us know, as we're starting to get requests for one.

Thanks again for your support of MAAS and I look forward to seeing you on the 19th.

Sincerely,

Kathryn



March 14

Mars enters Pisces at 11:20 p.m.

March 20

Vernal Equinox: Sun enters Aries at 7:44 a.m.

March 25

Mercury enters Aries at 3:56 p.m.

April 4

Pluto Stationary Retrograde Taurus at 1:35 p.m.

April 10

Mercury enters Taurus at 10:21 a.m.



HAPPY RETURNS
TO THIS MONTH'S
MEMBERS!!!



THE EDITOR'S CORNER

Special thanks to Erika Sowell and Kathryn Silverton for their contributions to this month's newsletter. Make sure they know you appreciate them. Also, please think about how you can contribute to MAAS and your newsletter.

Deadlines for submissions are the first of each month. Submit your entries to <herakles@comcast.net>.

LUNATIONS



March 26

New Moon in Aries 12:06 p.m.

April 9

Full Moon in Libra at 10:56 a.m.

NOTE: Taken from Jim Maynard's Celestial Guide 2009 and Quicksilver Productions.

UPCOMING SCHEDULE

March 19

Gary Caton

"The Power of Synodic Cycles"

The Synodic Cycles foster an awareness of the all-important power of the Sun as the central focal point of our system. An understanding of the Synodic Cycles can re-claim the power of the inner personal planets - as well as create a personal relationship with the social and generational planets. The Synodic Cycle begins with the conjunction of any planet with the Sun. We will explore each of these cycles, the major transition points within the cycle, and how to identify the ones that will impact your chart most personally.

April 16

Carole Devine

"Solar Arc"

There are patterns to solar arc that can be very illuminating regarding a person's lifelong journey. We will explore two of these pattern techniques using well-known public figures.

April 18

Carole Devine

"Putting It All Together"

To obtain a well-rounded view of what is being highlighted in a person's life in the future, more than one technique is necessary. This is a presentation of how to "put it all together" using transits, solar arc, progressions and tertiary progressions.

May 21 & 23: Thursday Lecture/ Workshop

Donna Van Toen

Innovative Approaches

(From the Front Page)

Juno: Connections and connectivity. The third and final phase of the transformational process where we follow synchronistic connections with new players who represent the new pattern we have invited into our lives.

Cathy Burroughs: Are there any female examples or goddess-types who could illustrate this from the female heroic perspective? Sarah Palin, Hillary Clinton and/or Diana Ross or other well-known female figures or performer/ musicians whose life has seen major transformations?

Gary Caton: Well, Sarah Palin is certainly an interesting figure! We covered her and the election chart on episode 16 of my podcast. Many people know that Election Day hosts a t-square from Evening Star Venus (Venus in front of the Sun) - but not too many know that Pallas complete this to a grand cross! And the other three Goddesses (Ceres, Vesta and Juno) form a grand trine!

I had my doubts about Hillary being a true representative of the sacred feminine - but Palin clearly wants to roll back Roe v. Wade - which is pretty scary - along with her foreign policy which seems to justify the continuation of preemptive strikes and covert ops in countries without permission. In my opinion, these policies can have no good end and are clearly aligned with the profane masculine or patriarchal model. In other words, she is just a prettier and smarter version of the puppet we've had for the last eight years.

Now Diana Ross - there is a Goddess! Wow, looking and listening to old clips of her early stuff just gives me the chills. We can look at her chart in a minute, but first I want to look at some mundane charts because I find the entire history of African Americans, the evolution of the blues and Motown very interesting.

Using the Asteroid Goddesses in the History of African American Culture in the U.S.

Gary Caton: The chart for the arrival of the first slaves is really something. Penfield gives a time of 10:15 am which is probably speculative, but the date is pretty much solid historical knowledge. John Rolfe documented the arrival on August 30, 1619 of "twenty and odd Negroes" in Jamestown on what we now know was a pirate ship. They had been stolen from slavers on the high seas and the pirates traded them for "victuals" - which means foodstuff and supplies. Clearly Ceres is in operation here on both the literal and archetypal levels as these twice abducted

(Continued on Page 4)

Innovative Approaches

(From the Page 3)

people are traded for food. Accordingly, Ceres is in grand trine to the Sun and Moon. Ceres in Capricorn also speaks to the eventual importance of slaves to the agricultural economy of the South and the resulting "Slave State" of the Confederacy.

I think Ceres also speaks to the process of transformation which Dr. King alluded to as America finally living up to the ideals of the forefathers. Most people don't realize the closest aspect in the Sibley chart for the USA is Ceres square Uranus - the closing of the Agricultural age and the dawning of the Industrial Age - which is what the Civil War was largely about. It is interesting that after Pluto's discovery Inauguration Day was moved so that the transiting Sun on that day would be conjunct Sibley Pluto. Before then it had been March 4 - which was conjunct Sibley Ceres. That kind of put a period on the whole process of transforming from Agriculture to Technology.

The Asteroid Goddesses in the History of the Blues and the Motown Sound

I don't have a chart for Motown records, but as a Mundane Astrologer, I might want to go even deeper than that. Why did the Motown sound start in Chicago? Well, in some ways it is probably because of Chicago's musical PRECEDENT.

The Chicago blues is a form of blues music that developed in Chicago, Illinois by taking the basic acoustic guitar and harmonica-based Delta blues (meaning Mississippi) and adding electrically amplified instruments. The music developed when poor Black workers did the "Great Migration" from the South into the industrial cities of the North such as Chicago in the first half of the twentieth century.

Now, what was this "Great Migration?"

The Great Migration was the movement of approximately seven million African Americans out of the Southern United States to the North, Midwest and West from 1910 to 1970. Precise estimates of the number of migrants depend on the time frame. African Americans migrated to escape racism, seek employment opportunities in industrial cities, and to get better education for their children - all of which were widely perceived as leading to a better life. Some historians differentiate between the Great Migration (1910-1940), numbering about 1.6 million migrants, and the Second Great Migration, from 1940-1970. In the Second Migration 5 million or more people relocated but migrants moved to more new places.

What are the mundane events we can specifically connect with this Great Migration?

... Diana Ross was from nearby Detroit (born 3-26-44 @ 11:46 pm EWT). She has a Scorpio Asc with the ruler Mars in Gemini in a close out-of-sign conjunction with Ceres in Cancer. I can hear her as Ceres singing to Mars "Someday, we'll be together." I also think this symbolizes her assertive, and, some might say, aggressive approach to personal transformation. She also has Pallas, the warrior Goddess and patroness of the Arts, conjunct an exalted Moon in Cancer.

Diana's music career began in 1959 when The Supremes formed from neighborhood friends. Progressed Vesta had reached conjunction with natal and progressed Saturn in Gemini. The group changed members a couple times and eventually auditioned and signed with Motown in 1961. Progressed Pallas was trine the progressed Midheaven during this period.

Summing it up...

Cathy Burroughs: Is there anything else of importance that you'd like to add on this topic?

Gary Caton: While it might not be quite as natural for each of us to change paths, with some supportive counseling, I have found that embarking on a new path becomes very enlivening and rewarding for many of my clients. If you think you might be ready to Re-Vision your Future and Trans-Figure your Life Story, I hope you will find someone who has the skills, experience and practical know-how to act as your personal Shaman, Psycho pomp or "Soul Guide." You can also listen in to the Goddess Astrology Podcast for a bi-monthly exploration of the Goddess archetypes at each Lunation. I look forward to exploring the sacred feminine with you!

Editor's Note: This article was edited with apologies to Cathy and Gary due to space limitations and the goal of completing the series prior to Gary's visit. If you would like to read the entire unedited article, contact Cathy Burroughs at <CathyB108@aol.com> or Gary Caton at <gary@dreamastrologer.com>

